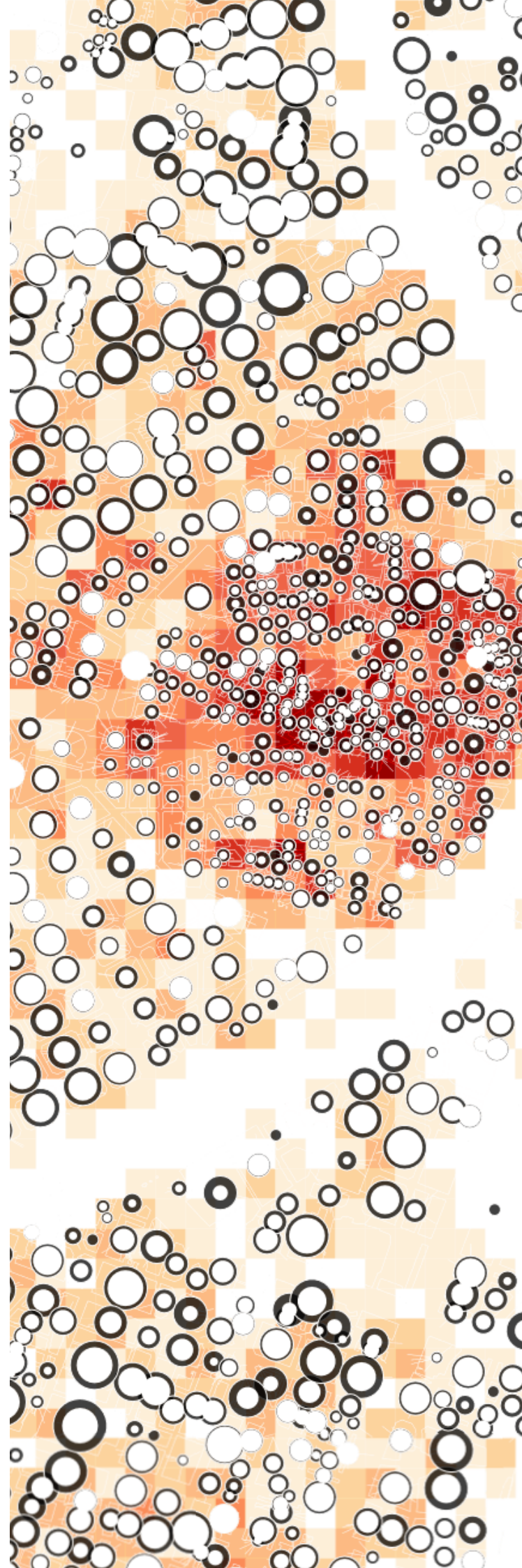


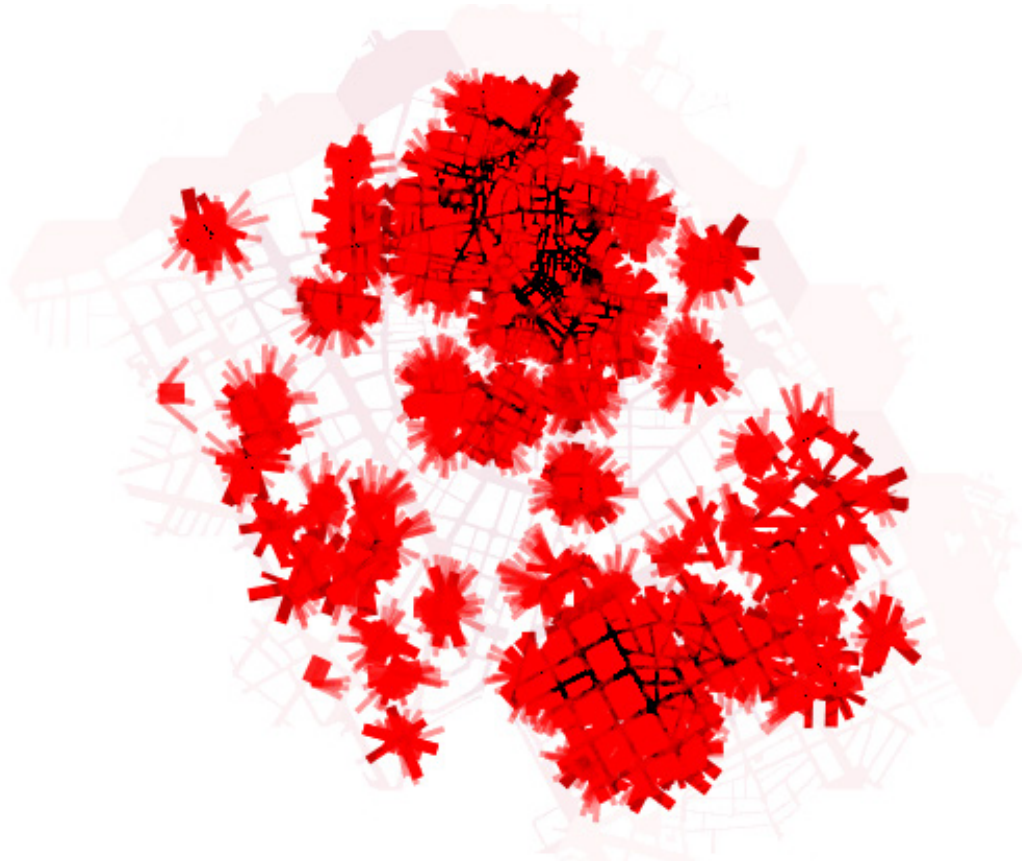


# **double height** studio

---

Marian Planelles / Manuel Ibarra





## **double height** studio

---

We are an architecture and design studio based in Valencia, Spain, focused on Bangladesh.

It's the natural evolution of the professional relationship between Marian Planelles and Manuel Ibarra after eleven years of collaboration among continents, working with several bengali clients and partners.

We are convinced of the relevance and suitability of Modern and Mediterranean tradition. A vision that fits the needs of Bangladesh, which aspires to develop its architecture improving aesthetics, with respect for its cultural heritage and its environment, and facing the need to incorporate an ecological and sustainable spirit to increase its climate resilience.

# double height studio

---

## Marian Planelles

Murcia, Spain. 1980

*academics:*

### architecture

ETSAV. Valencia, Spain, 1998-2005.

### arch. Specialty in Buildings

STUTT GART TECHNICAL UNIVERSITY,  
Stuttgart, Germany, 2005-2006.

### arch. Speciality urban planning and landscape

UNIVERSITY IBEROAMERICANA DE  
PUEBLA. México, 2007.

### master international development cooperation

UNIVERSIDAD JAUME I, Castellón, Spain,  
2010-2011.

### Thesis Master

UNIVERSITY SAN SIMON, Cochabamba,  
Bolivia, 2011.

*main work experience:*

### RAOUL COSTES STUDIO

Landscape Architecture. México.  
Junior Architect, 2007.

### BENTHEM CROUWEL ARCHITEKTEN

Amsterdam, Netherlands.  
Junior Architect, 2008.

### MEASURED ARCHITECTURE STUDIO

Vancouver, Canada.  
Team leader architect, 2009-2010.

### ARCHITECT MAEC by AECID

Cochabamba, Bolivia.  
Teacher and thesis in the university, 2011.

### TILOTTOMA BANGLA GROUP

Bangladesh. Principal Architect, 2013-2014.

### SANMAR PROPERTIES

Principal Architect, 2015.

### INDESORE LIVING SOLUTION

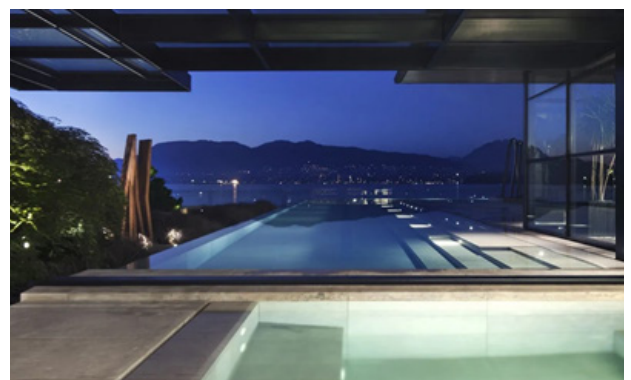
Principal Architect, 2016-present.



RAI Elicium Congress Centre. Amsterdam, 2008



Fletcher Hotel. Amsterdam, 2010



waterfront Residence. Vancouver, 2012

# double height studio

---

## Manuel Ibarra

Alicante, Spain. 1978

*academics:*

### architecture

ETSAV Valencia, Spain. 1996-2005

### arch. theorics and cultural management

ENSAM Montpellier, France. 2005-2006

### arch. master MUAH

UEV Valencia, Spain. 2021-2022

*main work experience:*

### ESTAL KLOUMANN ARQUITECTOS

collaborator 2006-2019

### DUGUEVAL

technical office 2007-2020

### DESAYUNO CON VIANDANTES

manager 2008-2018

Collective focused on the activation of public space, participatory urbanism and cultural agitation

### JAUME ESPÍ ESCULTURA

artistic director 2008-2016

Lost wax bronze casting. Company specialized in bronze sculpture of different scales, from interior design to landscaping.

### INDESORE LIVING SOLUTIONS

architect 2018-2021

### FRANCACHELA TEATRE

collaborator 2010-2024

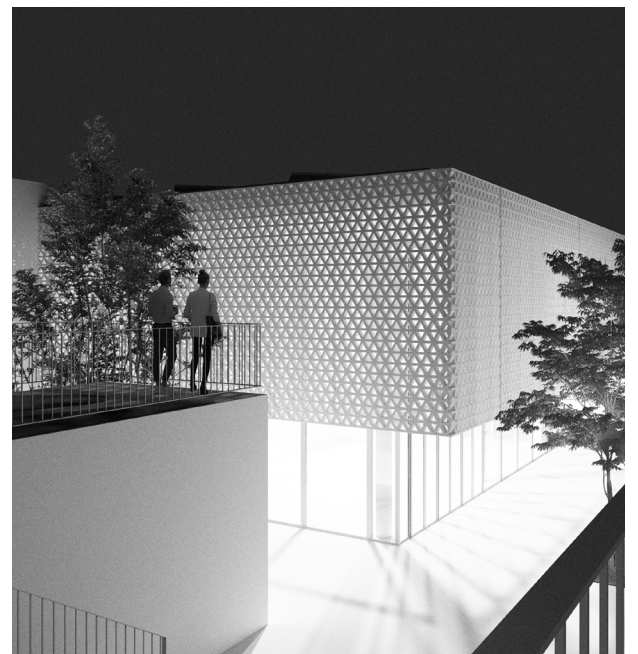
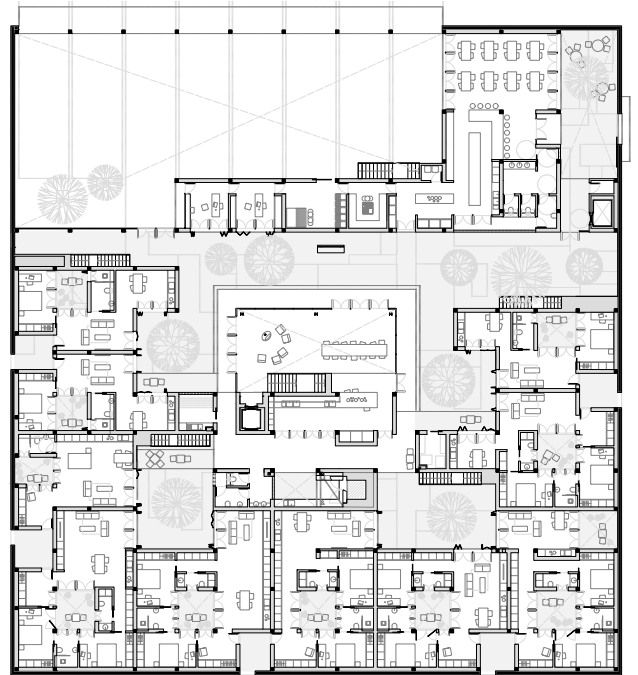
Cultural management focused in scenics

*other collaborations:*

A CONTRAPEU architecture

INÉS GARCÍA CLARIANA architect

ARTURO SANZ architect



# double height studio

---

## recent common trajectory

### INDESORE LIVING SOLUTIONS

Bangladesh, 2018 till present



**residential** Dacca 2019



**retail** Dacca 2019

# double height studio

---



**industrial** Dacca 2019



**residential** Dacca 2020

# double height studio

---



residential Dacca 2020

# double height studio

---



**residential** Dacca 2020

# double height studio

---



**residential** Dacca 2020



**double height** studio

---

info.doubleheightstudio@gmail.com

